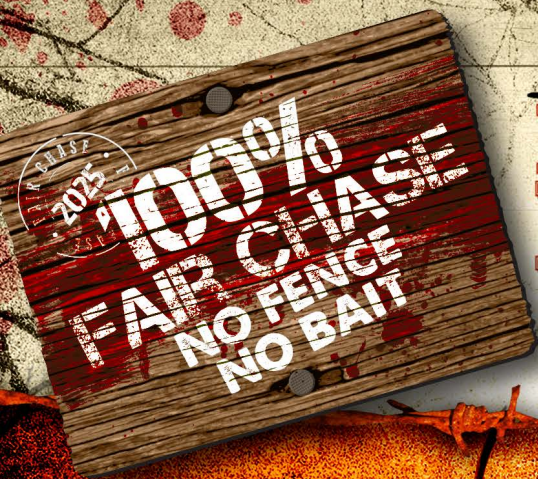


MISSOURI

IOWA



BORDER BUCKS *Outfitters*



Friends  *Family*  *Traditions*

Specializing in fair chase hunts for trophy deer and turkey.
www.borderbucksoutfitters.com

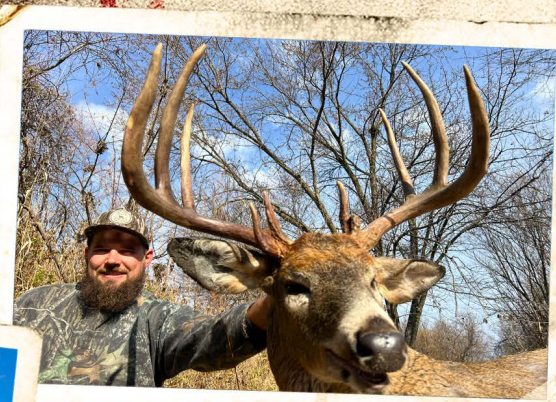
We are a family owned

and operated business. We are full time Outfitters, living in the center of the land that we guide on. We are also small farmers, and spend all year on and around our properties, watching fields with good optics, running trail cameras, working on food plots, working on stands, and general scouting. I have hunted all of this land since I was a child, and I know this area like the back of my hand. Border Bucks Outfitters was started in 2005, and we are proud to say that we have clients returning who have hunted every year with us since the beginning.

We have a great % of repeat clients, and there are several reasons for this. We want each and every client, new and old to have a hunt of a lifetime.

We strive to provide a top quality trophy hunt, at an affordable price. We can not guarantee you a 200" whitetail buck, but the chance is there.

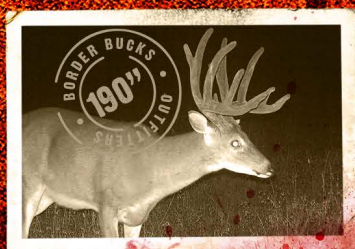
We will guarantee you a top quality hunt, top quality animals, a clean and comfortable lodge and kitchen, great meals and experienced guides who work hard to give you a great hunt.



The Hunt Area

consists of approximately 23,000 acres of private land along the Missouri and Iowa stateline, which is considered by many to be one of the best whitetail trophy hunting destinations in the country. Our land is primarily rolling hills with hardwood timber, agriculture fields, river bottoms, and CRP fields. Our area has corn, soybeans, alfalfa, and clover fields throughout. We also enhance a lot of our farms with food plots which consist of Corn, Soybeans, Milo, Wheat, Alfalfa, Clover and a variety of specialty food plot seeds. We also have mineral stations throughout the land to enhance antler growth and overall health of our deer herd. All of our land is strictly managed for trophy deer and turkeys. We are located about 2 hours from the Kansas City, MO airport and 1 hour and 46 min. from the Des Moines, IA airport where you can either rent a car or make additional travel arrangements.

Specializing
in fair chase hunts for
trophy deer and turkey
on 23,000 acres of private
land along the Missouri
and Iowa stateline.



Deer Hunts

In Missouri, the state has a 4 pt restriction in our area, which has been in place for several years, and has given us great results. We also have put a 140" P&Y minimum on our archery hunts, and a 140" B&C minimum for all gun hunts. Even though the 140" minimum is the rule, mature deer that are pre determined to be management deer will not fall under the penalty fee. If a buck is taken under the minimum, a \$1500.00 fine has been put into place to ensure trophy quality. We offer Firearms hunts

and Archery hunts in Missouri and Iowa, as well as combination hunts to hunt 2 states and or multiple bucks. Our deer hunters will be hunting from the stand or blind of their choice, and we have over 450 stands and locations that are accessible to everyone. We have a variety of tree stands, including Loc On's, Ladder Stands, Tripods, Ground Blinds, and Shooting Houses. All stands are equipped with life lines for safety, and all stands are equipped with a bow/gun holder, backpack hook, and a pull up rope.

Our bow stands are hung to bow hunt out of, and most of our deer that are shot with a bow, are shot at 25 yards or closer. Our gun hunters seem to shoot most of their deer at 100 yards or closer.

We harvest record book bucks on a regular basis, and our average buck is 146 inches. We strive to provide a top quality hunt with great shot opportunities.

I have hunted this land since I was a child, with my father, grandfather, and uncles and I know the land inside and out.

We do our homework, we have the stands where they need to be, we know what wind we need to hunt each and every one, and we know the back doors to get you into and out of them with the least amount of disturbance. Low pressure on our farms equals high success for our hunters. We also offer youth hunts for deer.

Turkey Hunts

We offer both guided and non-guided Spring turkey hunts in Missouri, guided only in Iowa. In Missouri we can only hunt until 1:00 in the afternoon, Iowa we can hunt all day, which makes for a great combination hunt. During the Spring turkey season we also have several ponds with great crappie and bass fishing, as well as some of the best Morel Mushroom hunting areas in the country. Our turkeys average around



23 lbs and we take several each year over 25lbs. We are in a great area for long spurs and thick long beards. We have taken several birds with 1 3/4" spurs and longer. On an average morning in the turkey woods you will hear at least 15 different gobblers, and I have heard over 25 if conditions are right. We also offer youth hunts for Spring Turkey as well.

Other Hunts We also offer Shed hunts, Predator hunts for Bobcat and Coyote, as well as wild upland game, and a preserve hunt for upland game.

Accommodations We have a very nice lodge, it is just a few years old, it is very clean and comfortable. The lodge has 11 bedrooms and 9 bathrooms with 2 master suites with Queen size bed and private bath for those who have a spouse that hunts or just wants to tag along. The lodge has a big screen TV, Direct TV, wireless internet, scent free washers/dryers, 30 yard indoor archery range, outdoor 3-D range, and an outdoor rifle range. The kitchen/dining hall is a separate building to keep the noise and food smells out of the lodge. Our breakfasts consist of a cereal, oatmeal, pastries, fruit, coffee, juice and homemade breakfast burritos. Lunches are self made, and can either be sandwiches and or leftovers. We provide a variety of lunch meats, chips, snacks and fruit. Dinners are large home cooked meals with homemade desserts. You will not go hungry while you are with us.





Booking A Hunt

If you are interested in booking a hunt, contact us via email or phone. We will have you fill out an application, and mail it back with a 1/3 deposit. We have a limited number of slots available, but we do book 2-3 years in advance, so if you are planning a hunt, do not wait until the last minute. Deposits are Non-Refundable, however they may be rolled to another time/year upon availability, as long as the balance is paid in full by the date of originally scheduled hunt.

2025 Prices (Sales Tax included)

Archery Deer 5 day hunt _____	\$4325.00
Firearms Deer 5 day hunt _____	\$5225.00
Youth Firearms Deer 3 day hunt _____	\$2645.00
Muzzleloader Deer 6 day hunt _____	\$4450.00
Archery Combo (Missouri/Iowa or Early/Late) 11 day hunt _____	\$8075.00
Archery/Gun Combo 11 day hunt _____	\$8650.00
Spring Turkey Unguided 3 day hunt _____	\$1375.00
Spring Turkey Guided 3 day hunt _____	\$2005.00
Spring Turkey Combo Guided (MO/IA) 4 day hunt _____	\$2600.00
Youth Turkey Unguided 2 day hunt _____	\$750.00
Youth Turkey Guided 2 day hunt _____	\$950.00
Predator Hunt 3 day hunt _____	\$1375.00
Upland Bird Hunt 3 day hunt _____	\$1110.00
Non Hunting Guest _____	\$185.00



All deer and turkey hunts

are priced for 1 deer or 1 turkey, to harvest an additional deer (doe only) or turkey there is an additional \$150.00 fee. Your hunt will conclude when you

Notes

Obtaining Licenses

All Missouri licenses need to be purchased online from the Missouri Department of Conservation, prior to arrival or at Sporting Goods stores in Mo. (Walmart). **Licenses for Iowa Deer and Turkey are by draw only**, we hunt zone 4 for turkey and zone 4 and zone 5 for deer. The application time for turkey is in Jan., however leftover permits are available, please ask for details. Application time for Deer is early May to early June. Iowa has a preference point system, and our archery hunters are drawing tags with 4 or 5 preference points, gun hunters 2 preference points, and late muzzleloader 1 preference point. Even if you are not planning to hunt Iowa this year, start building points, you can purchase a preference point only. Anyone hunting in either state with a firearm, will have to provide proof that they have completed a hunter safety course if born prior to Jan. 1, 1967.

We also offer Upland Game Bird hunts as well as upland game preserve hunts, check our website for additional information.



Your guide and cook work very hard to provide a great hunt, gratuity is greatly appreciated.

Distance to Lodge

Harrisburg, PA

1078 miles - Travel time 16:37

Pittsburgh, PA

881 miles - Travel time 13:36

Des Moines, IA Airport

97 miles - Travel time 1:46

Kansas City, MO Airport

124 miles - Travel time 2:13

Seasons

All Seasons are set by the Department of Conservation of Missouri and Department of Natural Resources of Iowa, Seasons are subject to change.

Missouri

2025 Dates - www.mdc.mo.gov

Archery Deer

Sept. 15-19, Sept. 21-25, Oct. 15-19, 21-25,

Oct. 28-Nov. 1, Nov. 3-7, 9-13

Nov. 15-19, Nov. 21-25

Dec. 27-Jan. 6, 2026

Nov. 28-Nov. 30

Apr. 21-May 11

April 12-13

Jan. 16-Mar. 31 Thermal Feb. 1-Mar. 31

Iowa

2025 Dates - www.iowadnr.gov/Conservation

Archery Deer

Oct. 1-Dec. 5

1st Season Gun

Dec. 6-10

2nd Season Gun

Dec. 13-21

Late Muzzleloader

Dec. 22-Jan. 10, 2026

Spring Turkey:

Season 1 Apr. 14-17, Season 2 Apr. 18-22

Season 3 Apr. 23-29

Season 4 Apr. 30-May 18

References

Larry Berg, (MS),
archery and firearms deer,
(MO&IA) spring turkey,
601-209-3461

Dennis Harr, (PA),
firearms/muzzleloader Deer,
(MO), 724-316-1023

Lon Shelly, (PA),
archery deer, (MO)
717-887-7697

Jimmy Butler, (LA),
firearms deer, (MO),
318-243-0592

Alivia Spagnola, (MD),
firearms deer, (MO),
717-881-4225

Keith Lawyer, (NJ),
archery deer, (MO&IA),
609-865-5961

Jared Mohler, (GA),
archery deer, (MO),
706-319-2066

Mark Vitko, (VA),
firearms deer, (MO),
540-222-2614

Bob Capece (NJ),
archery deer, (MO&IA),
908-246-3505

Billy Walters, (VA), archery
deer, firearms deer, (MO),
540-219-8142

Paul Stafford, (MS),
firearms deer, spring
turkey (MO), 601-520-3082

Dave MacNeal, (MT),
archery deer, (MO),
727-560-0264

Bill Heller (PA) Archery Deer
(MO/IA) 570-885-9000

Jesse Stringfellow, (VA),
archery deer, firearms deer
(MO), 540-827-8880

George Gillett, (TN),
archery and firearms deer,
(MO) spring turkey,
423-244-4412

Ashton Wagonner, (CA),
firearms deer, (MO),
217-519-2951

Shawn Ball, (NY),
archery deer, firearms deer,
(MO), 845-399-9056

Tracy Coleman, (IL),
firearms deer, (MO),
217-521-6719

Billy Gathright, (AR),
archery deer, firearms deer,
(MO), 870-219-0507

Megan & Ivey Carter, (FL),
archery deer, muzzleloader
deer, turkey (MO/IA),
386-365-3034

*See web site for
additional references



17047 W. 140th Ave. ★ Hatfield, MO ★ 64458

Home 660.845.2052 ★ Bill 816-225-6754 ★ Jenn 816-777-7655



Bill@BorderBucksOutfitters.com ★ Jenn@BorderbucksOutfitters.com

www.borderbucksoutfitters.com

Designed and Printed by Full Draw Graphic Studios, LLC • 337 Goree Road, Alexander City, AL • 256-794-5466